

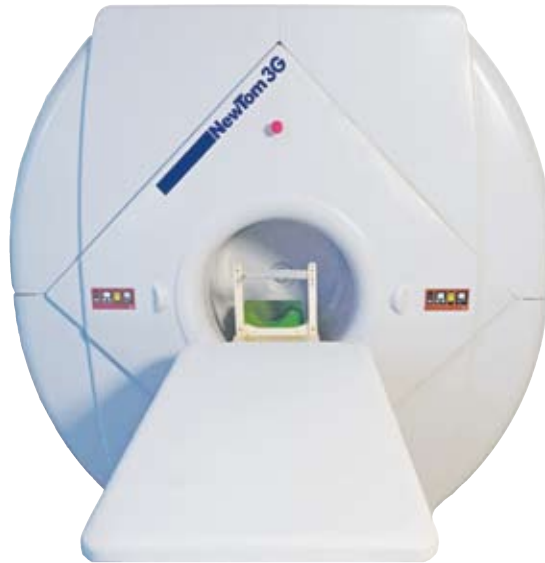
NewTom 3G

Cone Beam 3D Imaging System

The NewTom 3G is the only cone beam scanner on the market capable of providing three fields of view (6", 9", and 12" cephalometric), from a single scan. NewTom 3G is a full-size scanner that delivers a volume size of 8.5" as well as the ability to display additional FOVs with volumes sizes of 6.5" and 4.1" and increased resolution. The 12-bit 3G uses a 1024 x 1024 acquisition matrix with voxel sizes from .2mm to .4mm.

Setting the standard in supine cone beam imaging, the NewTom 3G has no visible moving parts that cause eye-tracking or head movement. Images are acquired with the patient lying down, resulting in greater image accuracy. The NewTom 3G enhances patient comfort and safety while increasing the efficiency of the scanning procedure.

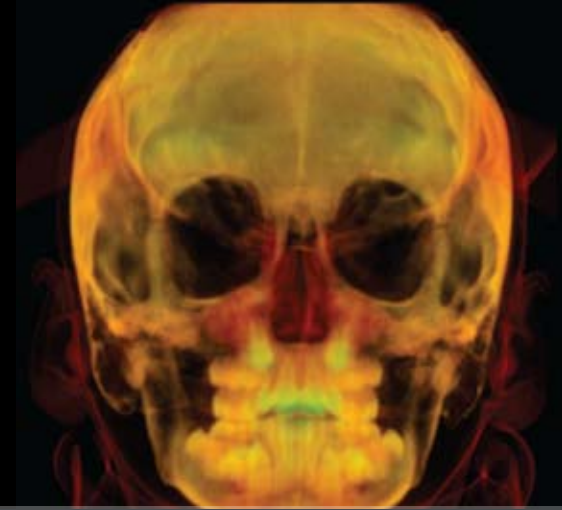
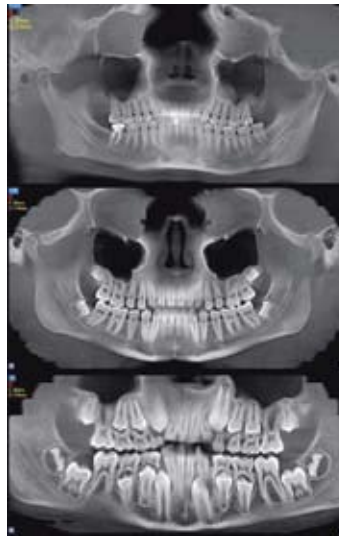
From one low-dose NewTom 3G scan, an unlimited number of diagnostic images are created: cephalometrics, panoramics, cross-sectionals, axials, sagittals, coronals and 3D images.



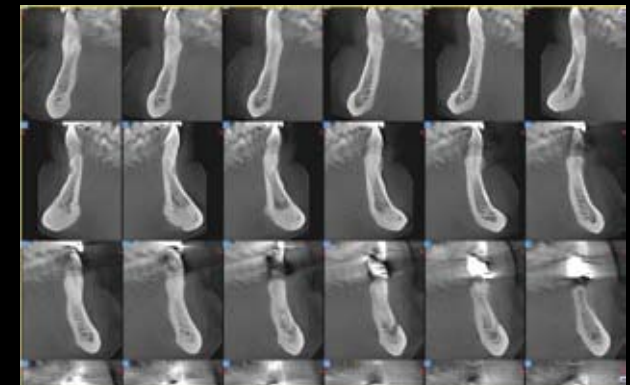
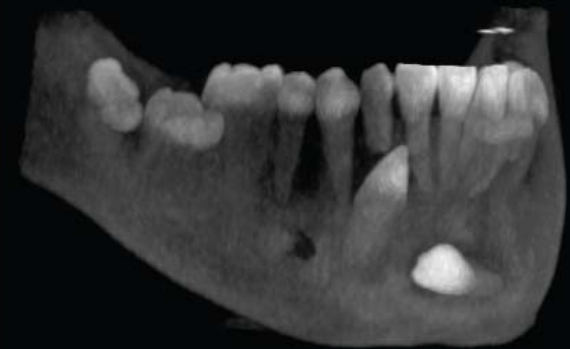
Most FOVs 6", 9" and 12"

Limited Patient Movement

Two Models Available



NewTom 3G



NewTom 3G Specifications

| | |
|-----------------------|---|
| X-ray Source | High frequency, constant potential (DC), stationary anode: 110 kV; 1- 15 mA (pulsed mode) |
| Focal Spot | 0.5 - 1.5 (IEC 60336) |
| X-Ray Cone Beam | Proprietary SafeBeam™ control reduces radiation based on patient size |
| Effective Dose | 60 μSv (ICRP 2007, estimate for adult) |
| X-ray Emission Time | 5s approximately |
| Image Acquisition | 360 Images - 360 degree rotation |
| Image Detector | Image intensifier and CCD camera, 1004 x 1004 pixels |
| Signal Grey Scale | 12-bit |
| Voxel Size | Typical and recommended 0.3 mm (dependent on scan setting) |
| Scan Time | 36s |
| Patient Position | Reclining |
| Reconstruction Volume | Diameter 7.9" / 20 cm (FOV 12"); 5.9" / 15 cm (FOV 9"); 3.9" / 10 cm (FOV 6") |
| Reconstruction Time | Approximately 1 minute |
| Weight | 1058 lbs/380 kg gantry only, 480kg with table |
| Software | NNT™ with free viewer and sharing application |
| Power Required | 200 / 230 v~ (± 10%) 50/60 Hz (± 1%) 4A max |

Specifications subject to change without prior notice.



Manufactured in Italy by QR srl,
an AFP Imaging Company
www.afpimaging.com

Free Viewer and Sharing Application

DICOM Conformant

Improved Software Integration

